



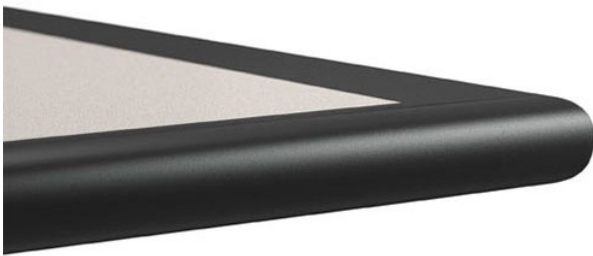
www.falconproducts.com | (423) 623-0031

71333 POLYURETHANE EDGE TOP

Starting At: \$530

Laminated table top with full bullnose urethane fused edge. Seals laminate to edge to avoid moisture leaking through to core material.

Falcon introduced the **Urethane edge table top** line several years ago with our **71111** bullnose and **71333** no-drip edge. Later urethane edges were included in our MATS line. People have responded well to the urethane product because it is softer than a PVC edge and anti-microbial. The fact that we mold the edge directly to the table core makes it virtually impossible to remove. Falcon is pleased to be expanding the urethane fused edge table line with the introduction of the **71120** edge. This edge is a **reverse knife profile** that is clean and creates a very sleek looking table. We think the table is perfect for contemporary dining applications where durability needs to dovetail into clean modern style.



Features:

Radius Corner: Radius 3" Standard

Options:

Dimensions

- 1.25" x 1.75" molded urethane fused edge full bullnose edge with no-drip feature high pressure laminate top surface several colors available, see finishes.